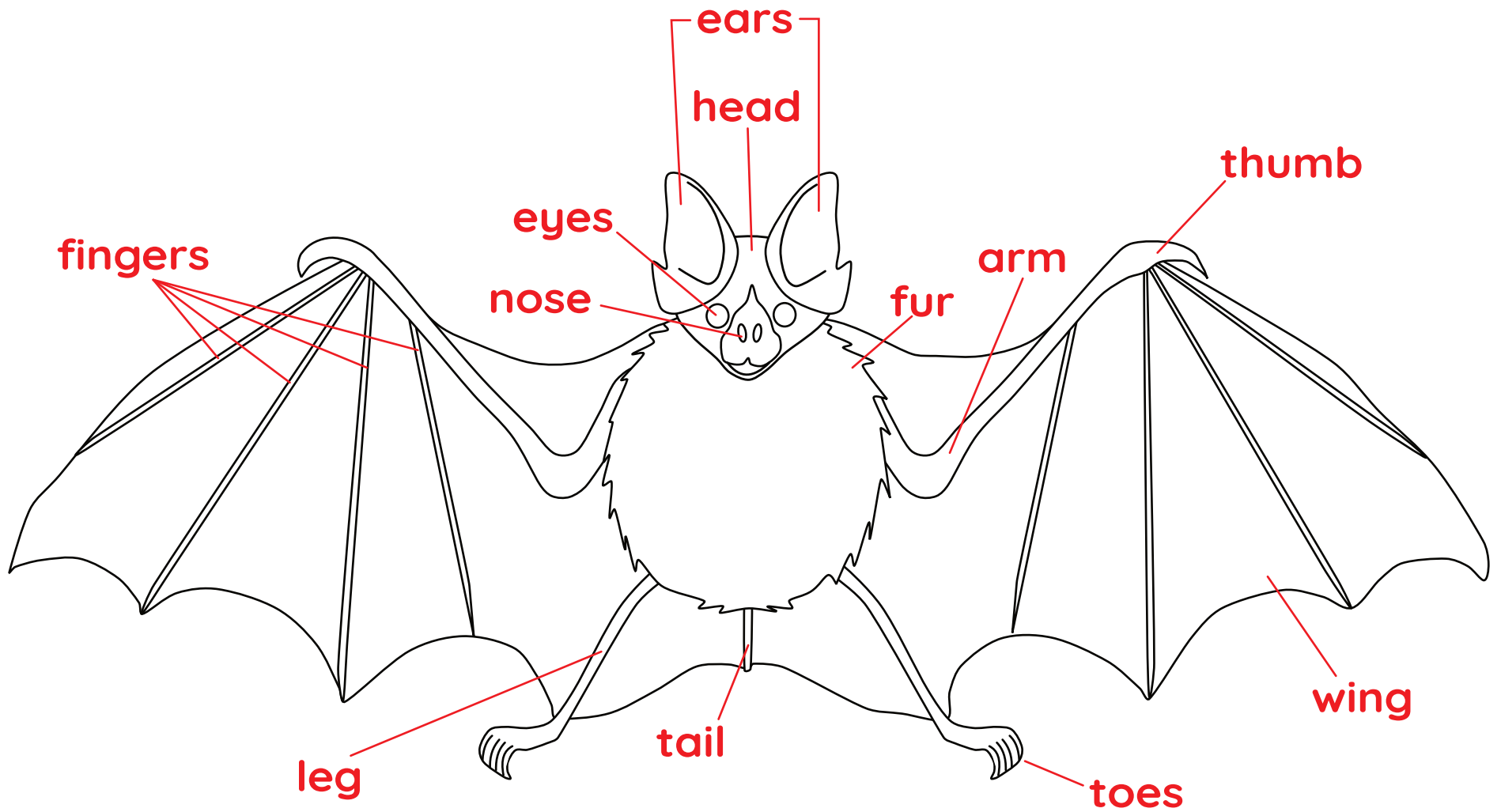
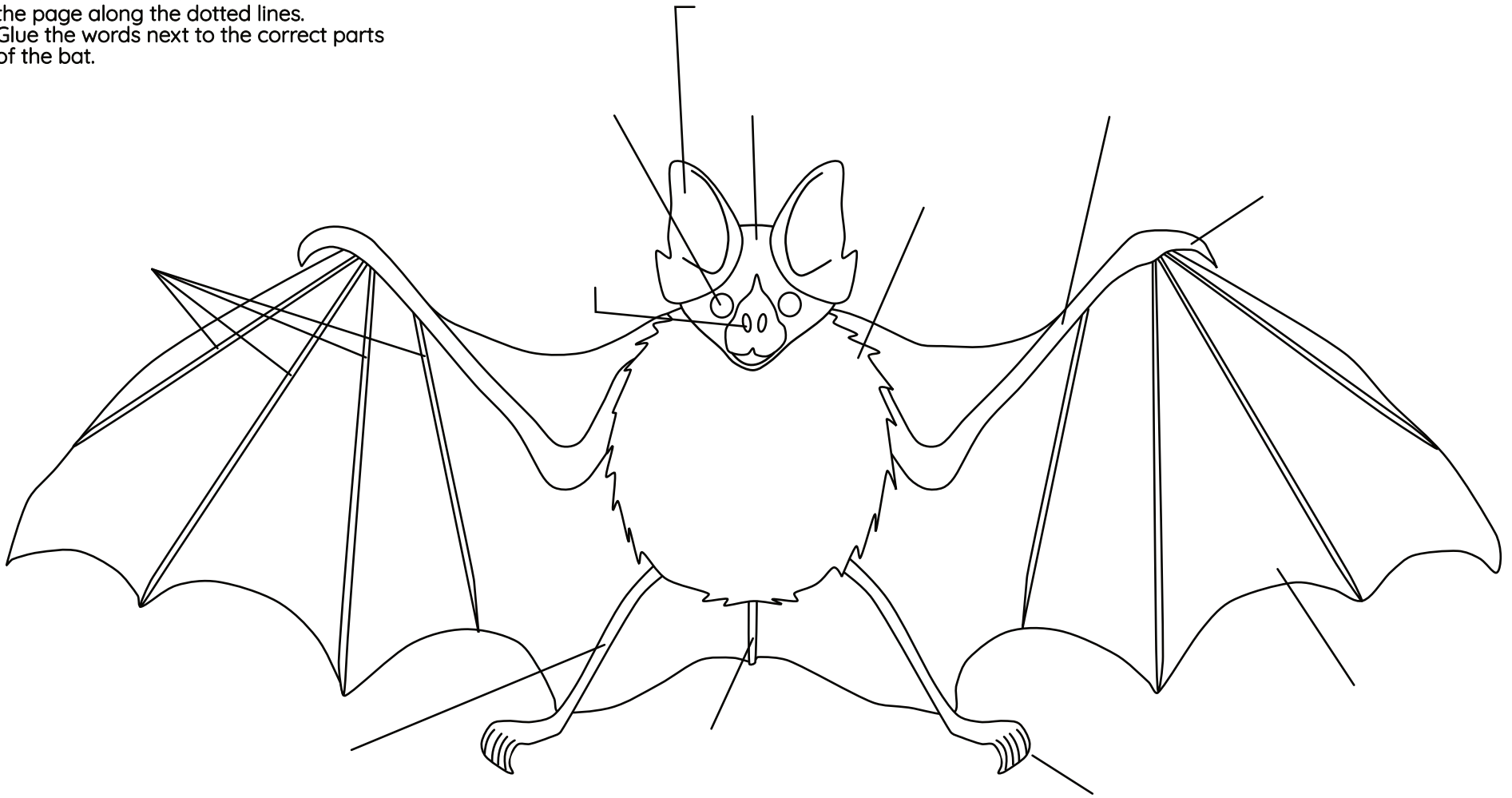


# Bat Parts



## Label The Bat Parts

Cut out the words at the bottom of the page along the dotted lines.  
Glue the words next to the correct parts of the bat.



fingers

tail

eyes

head

arm

nose

leg

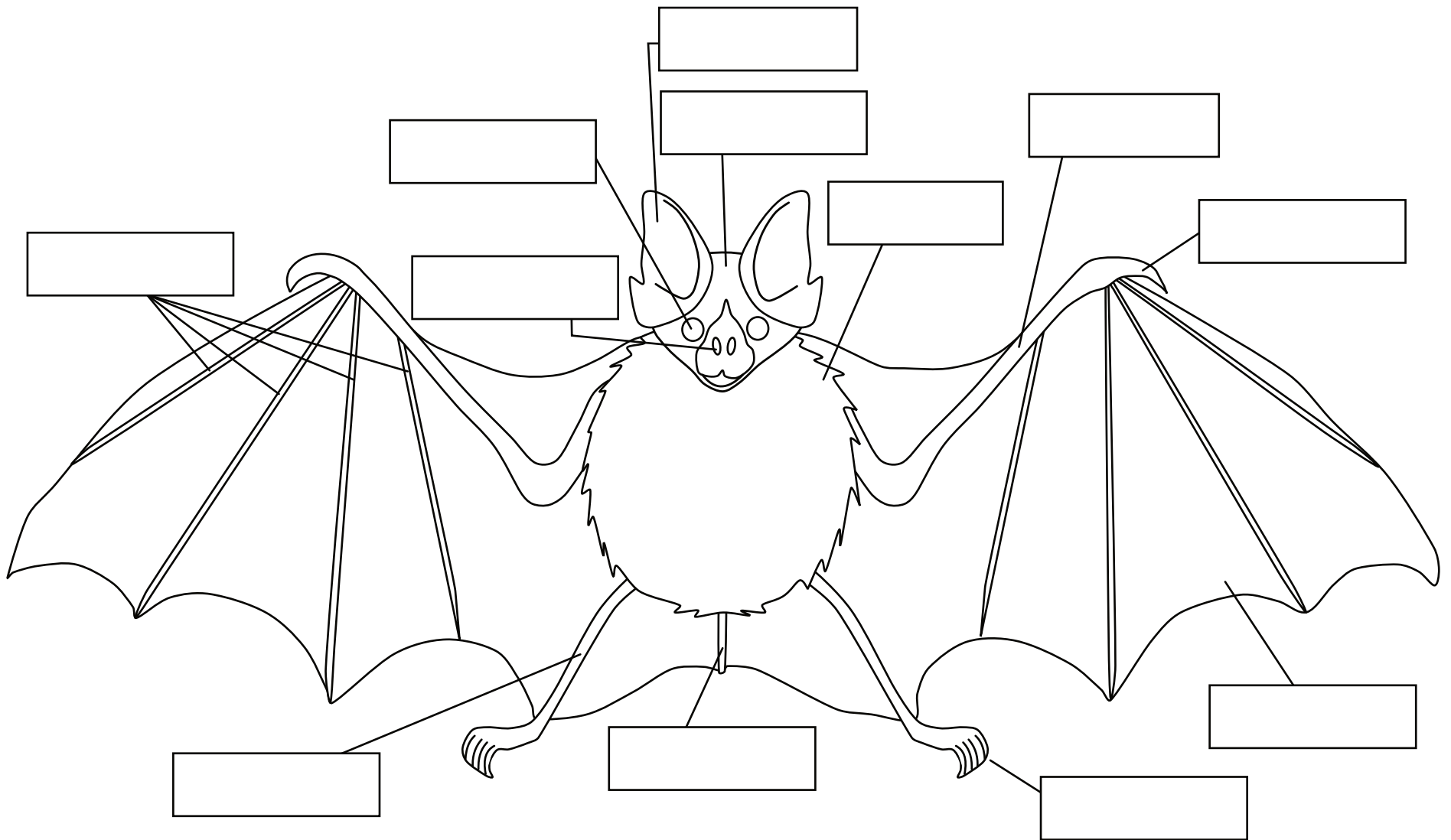
toes

wing

thumb

fur

ears



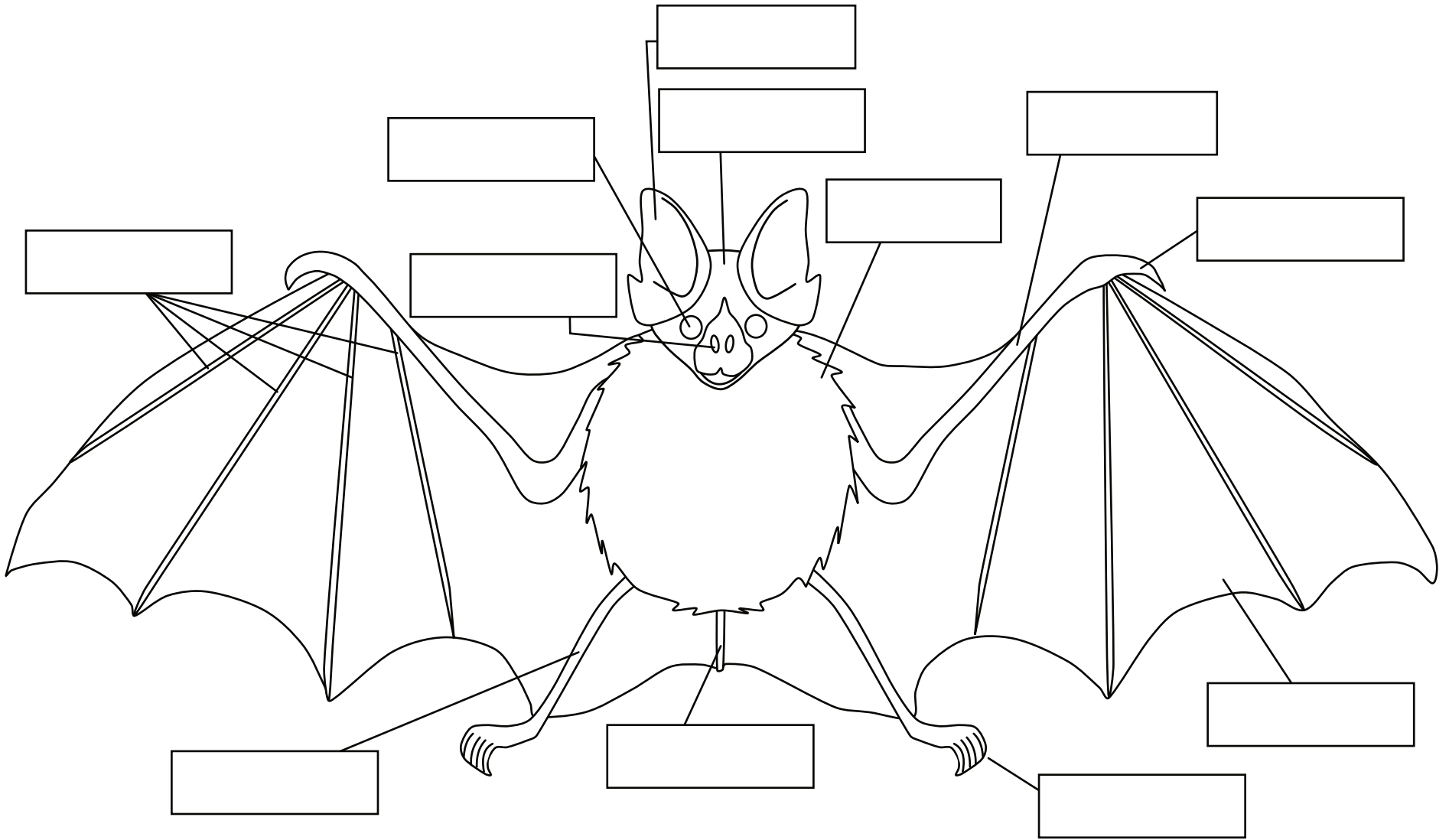
## Label The Bat Parts

Use the word bank to fill in the blank boxes and label the bat parts above.

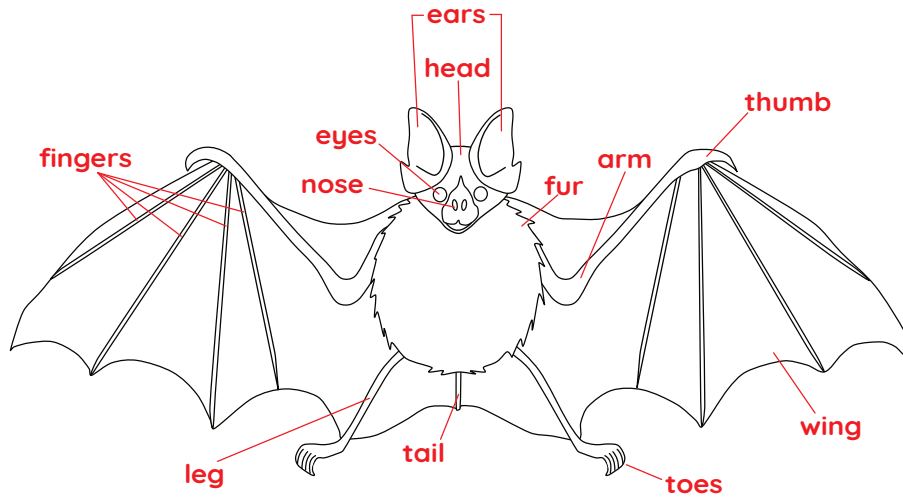
### Word Bank

fingers    nose    leg    thumb    arm    toes  
eyes    ears    tail    wing    fur    head

# Label The Bat Parts

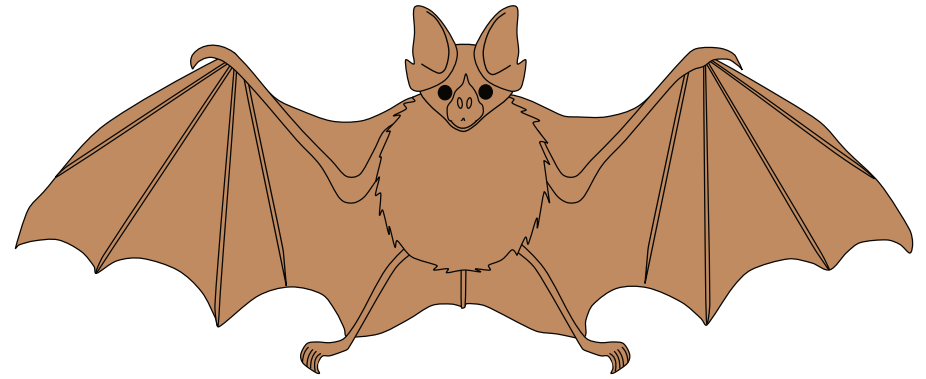


# Bat Parts Book

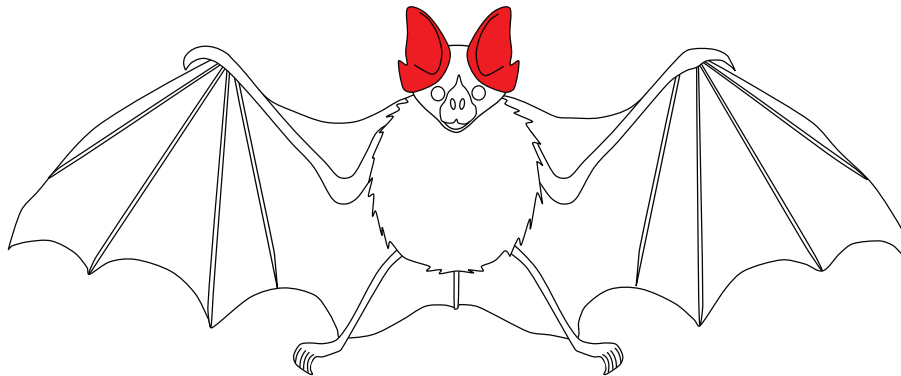


Name: \_\_\_\_\_

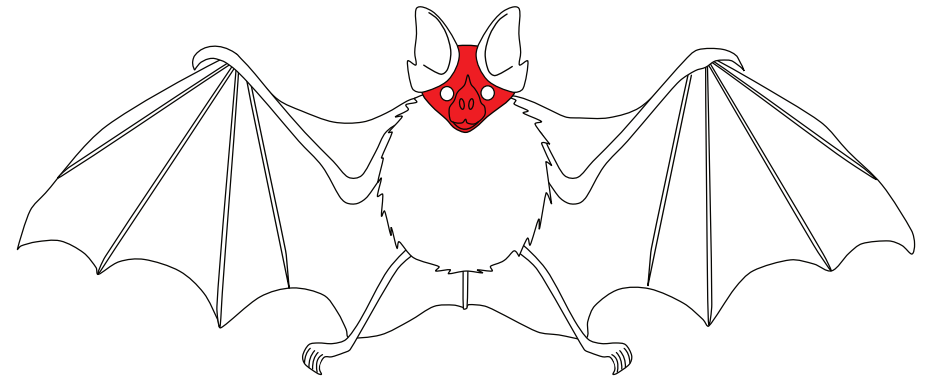
This is a bat.



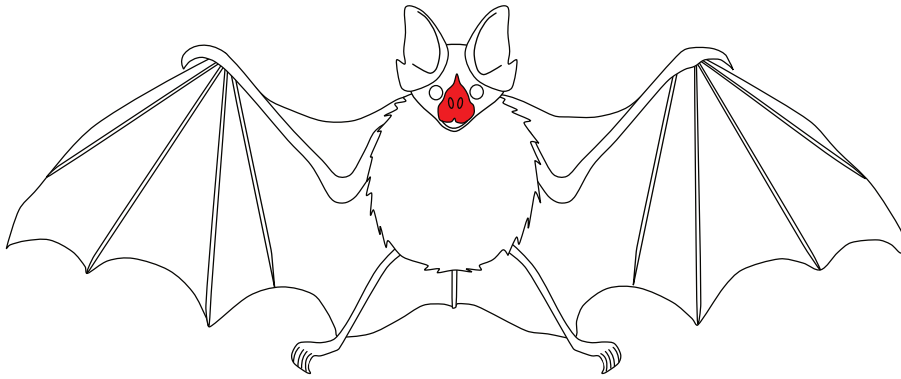
A bat has 2 ears.



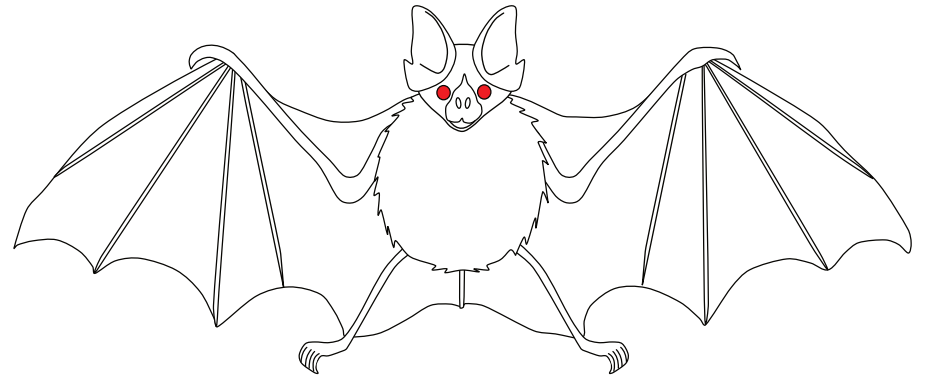
This is the bat's head.



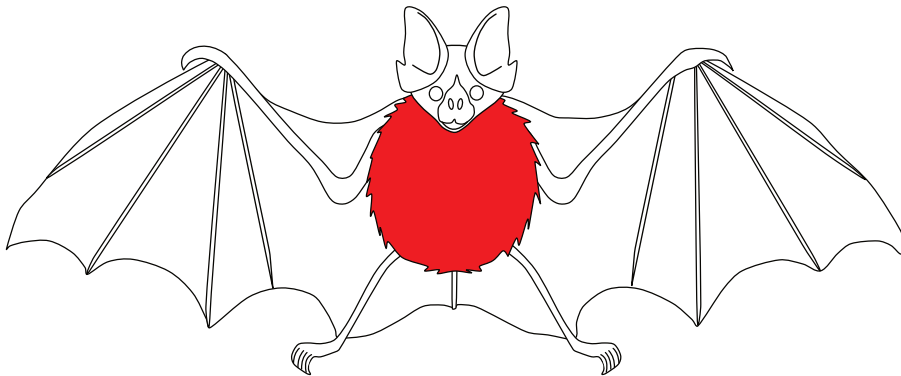
**This is the bat's nose.**



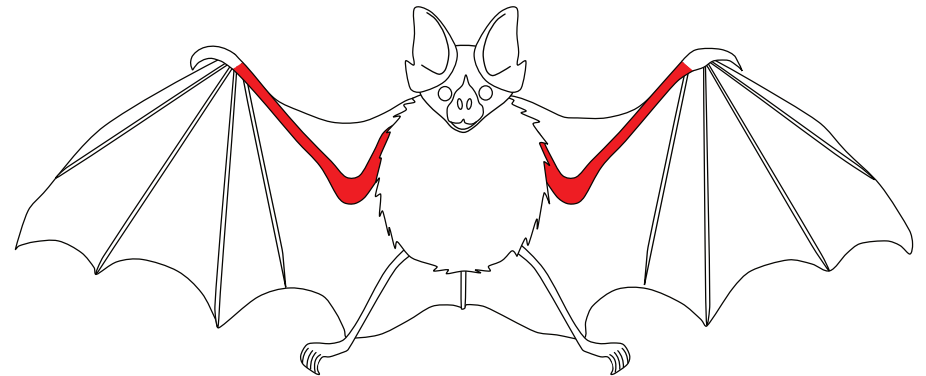
**This bat has 2 eyes.**



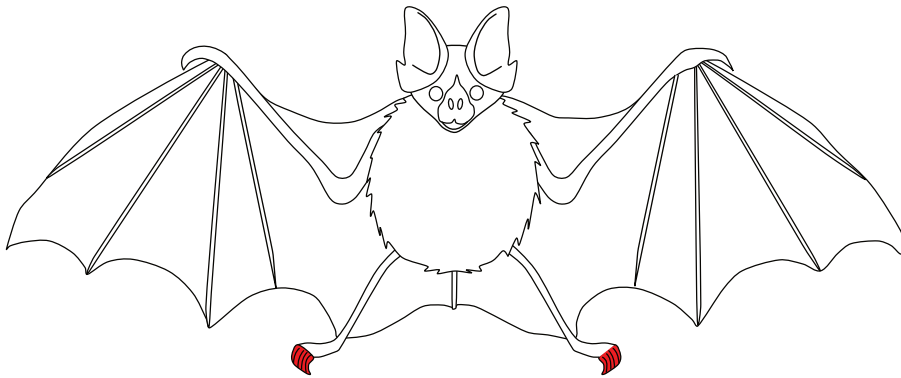
**A bat has a furry body.**



**A bat has 2 arms.**



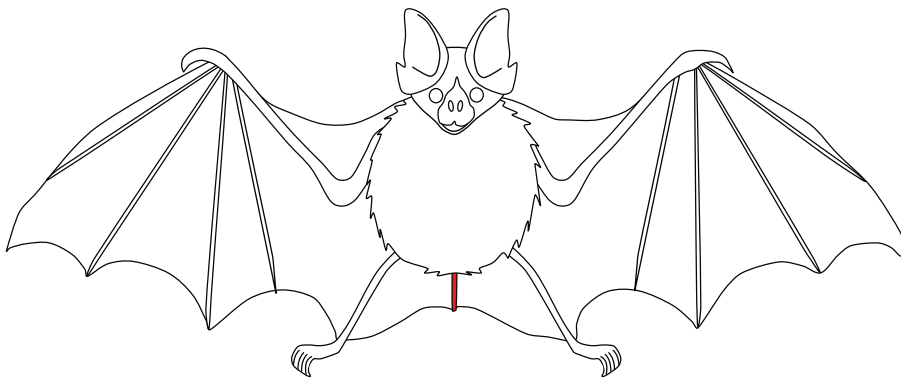
**This bat has 10 toes.**



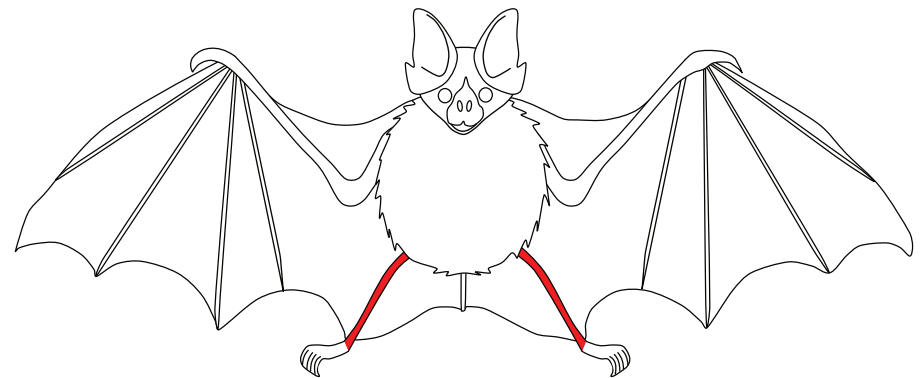
**These are the bat's wings.**



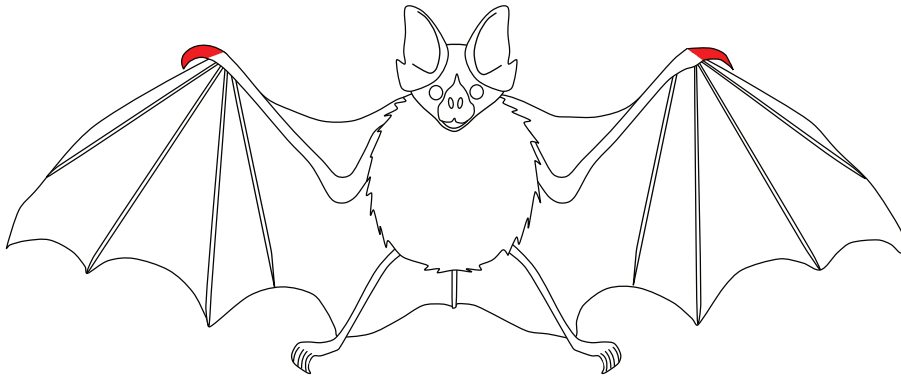
**This bat has a tail.**



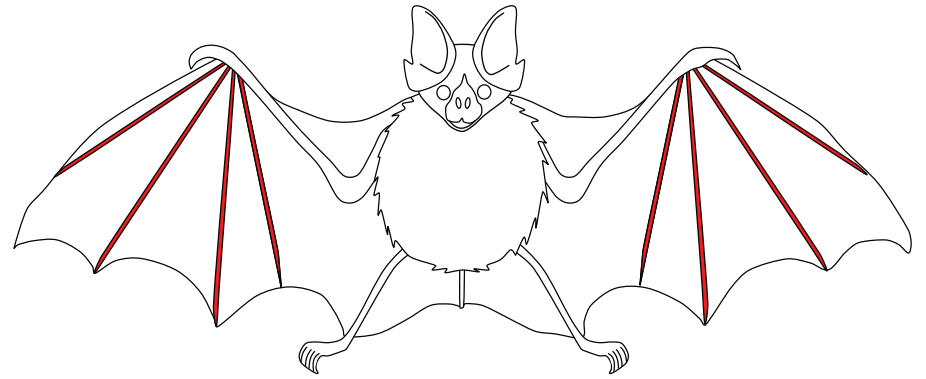
**A bat has 2 legs.**



**A bat has 2 thumbs.**

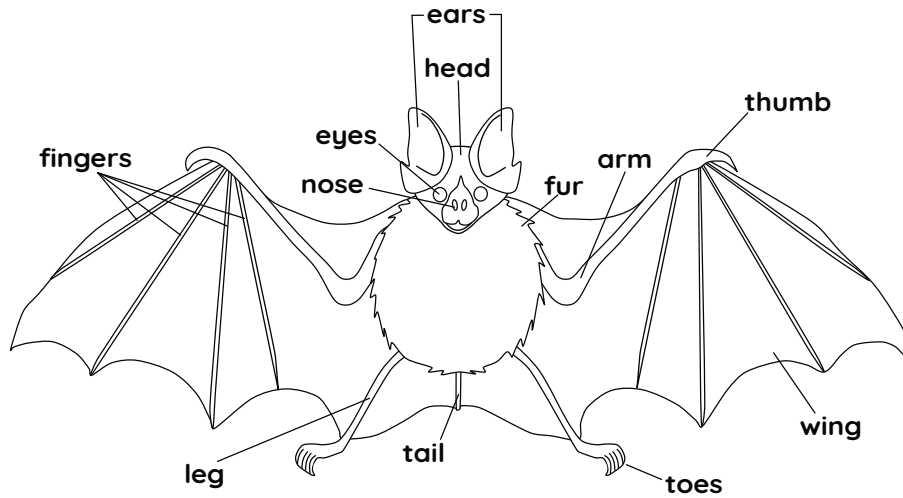


**A bat has 8 fingers.**



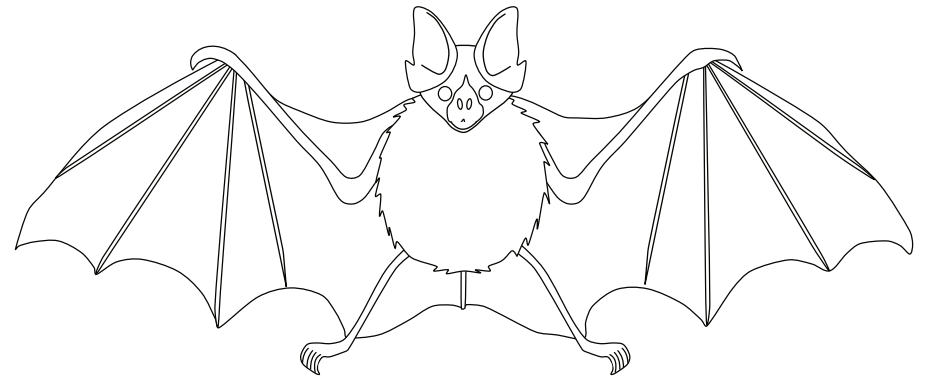


# Bat Parts Book

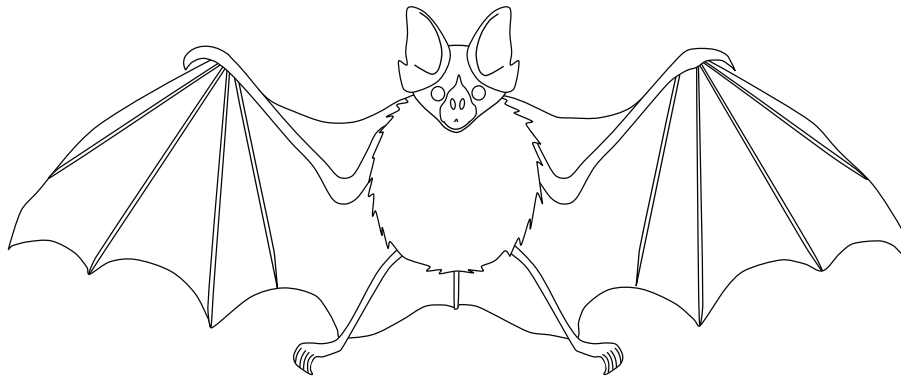


Name: \_\_\_\_\_

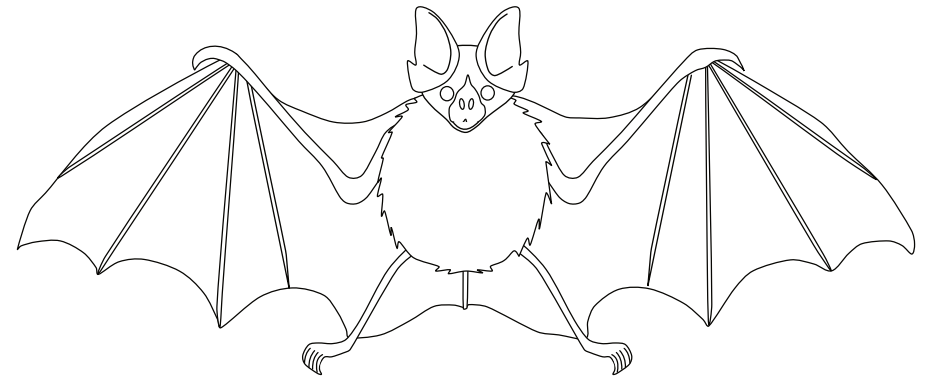
## This is a bat.



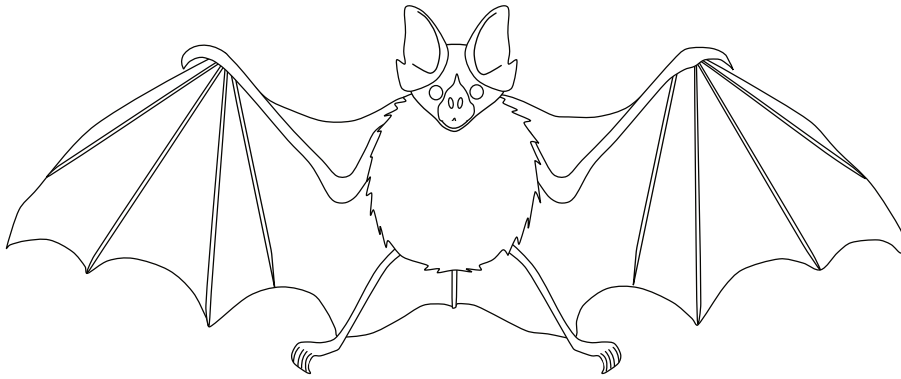
## A bat has 2 ears.



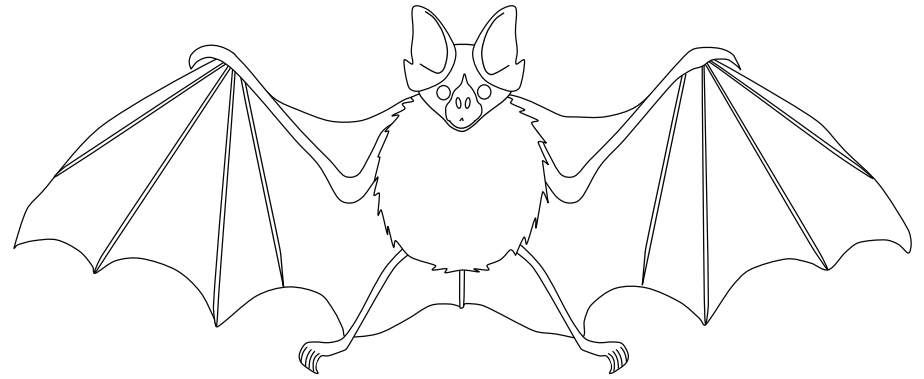
## This is the bat's head.



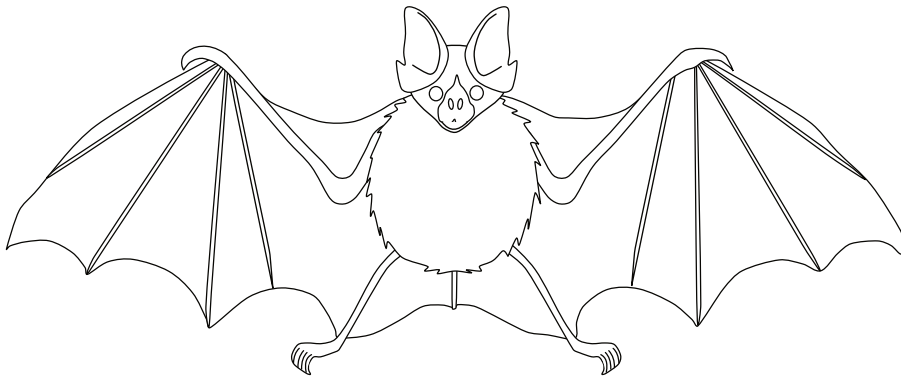
**This is the bat's nose.**



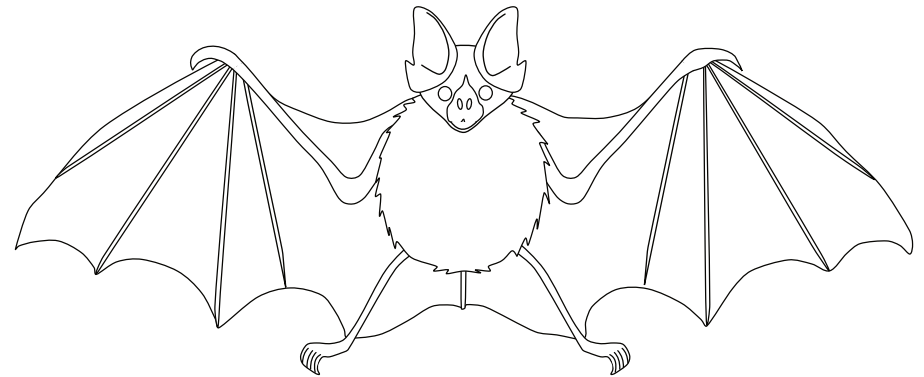
**This bat has 2 eyes.**



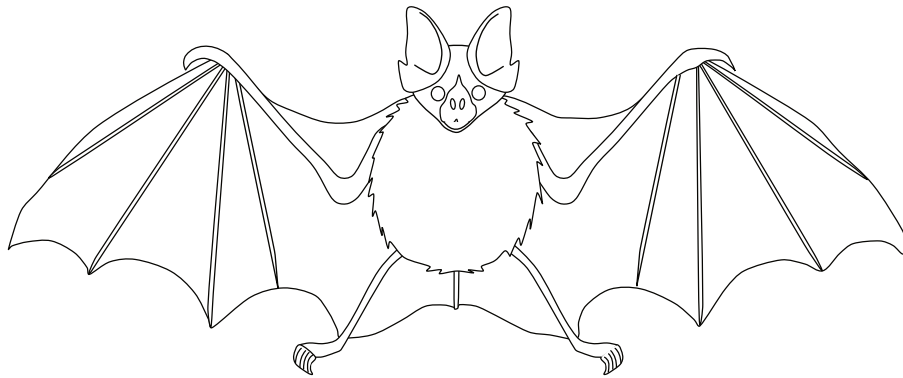
**A bat has a furry body.**



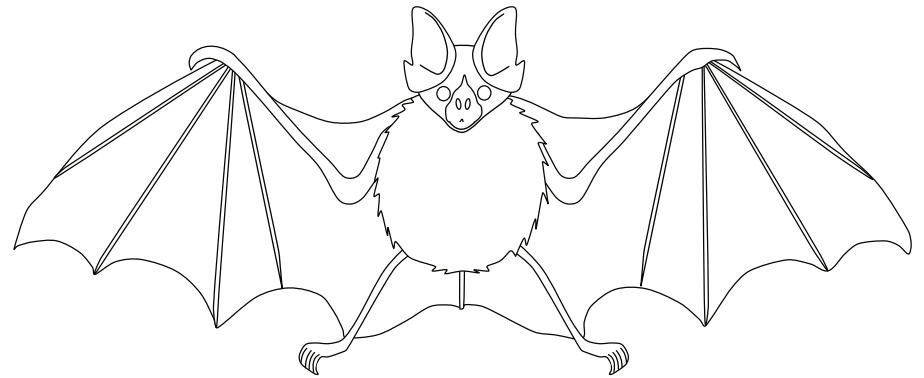
**A bat has 2 arms.**



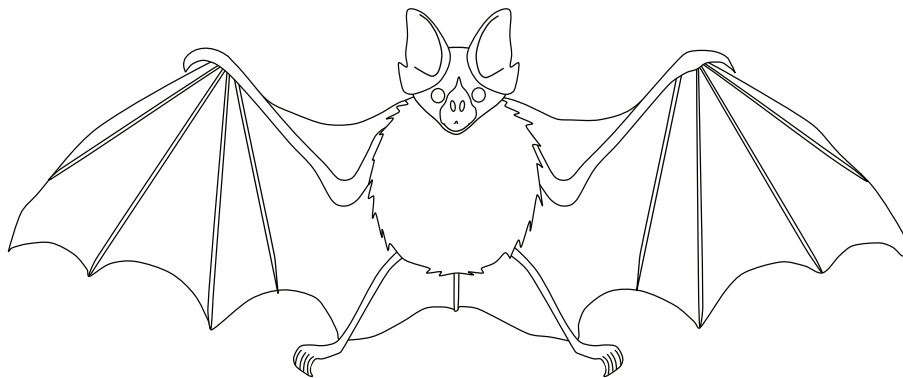
**This bat has 10 toes.**



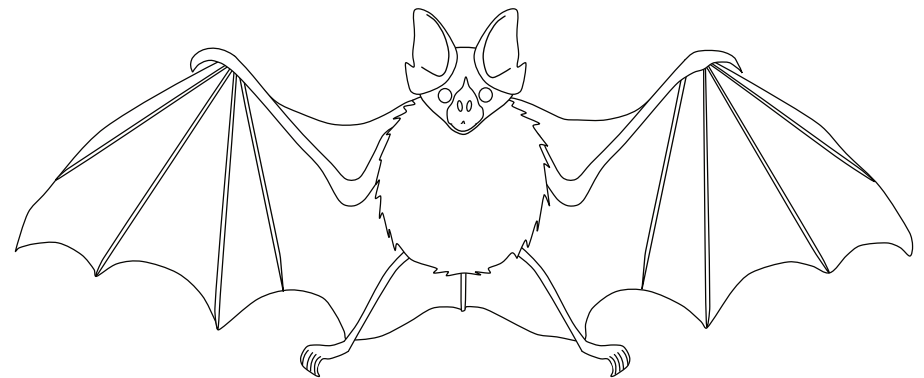
**These are the bat's wings.**



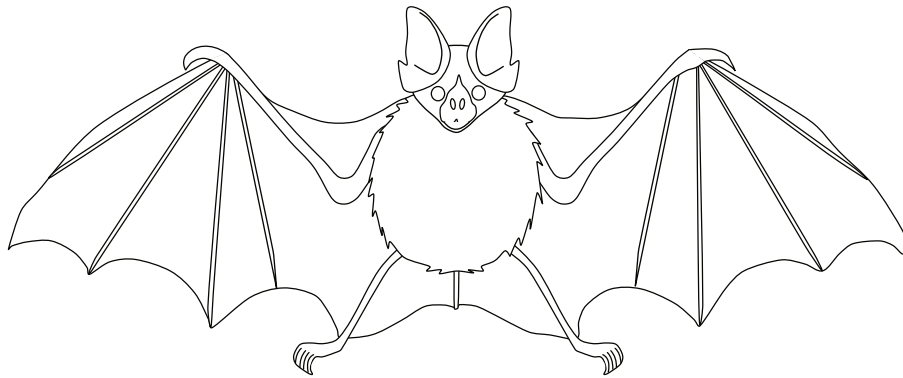
**This bat has a tail.**



**A bat has 2 legs.**



**A bat has 2 thumbs.**



**A bat has 8 fingers.**

